

Anvils

Multitude of models available

Cadex manufactures a multitude of anvils in accordance with existing standards. The quick release system (exclusive Cadex feature) allows technicians to quickly change impact setups.

FEATURES:

- Each anvil comes with a certificate of conformity
- Each anvil comes with a female quick release
- 360° positioning of the anvils
- More than 20 different models available

**Male quick connect and clamp are sold separately*



Shown during an helmet impact test



Hemispherical - P/N: 300_01_AH48

(SNELL / CPS / ASTM)



Curbstone - P/N: 300_01_ACPSC

(ECE R22)



Curbstone - P/N: 300_01_AC22



Catcher Helmet - P/N: 300_01_ACHND



Triangular Hazard - P/N: 300_01_ATH1

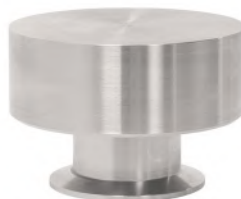


Edge - P/N: 300_01_AEQR



*Come with an
abrasive paper*

Oblique 45° - P/N: 300_01_AO45



Flat - P/N: 300_01_AF130

Ø50mm and Ø100mm also available



Cylindrical Ø75mm - P/N: 300_01_AC75